

Information Pack for Donors & Lenders



Dartford Masjid & Islamic Centre

A decorative graphic on the left side of the slide features several white paper cutouts of human figures holding hands in a line. The figures are set against a light green background. A large, dark green, irregular shape overlaps the top and right sides of the cutouts, creating a layered effect.

About US

- Dartford Masjid and Islamic Centre (DMIC) is a registered charity organisation, with the Registered Charity Number 1192212
- Our primary objective is to establish a centre for the Muslim community in the Borough of Dartford, Kent
- DMIC was established in 2019 by a collective effort of a group of believers and our leadership team includes a diverse range of brothers and sisters across multiple ethnic groups and varied professional backgrounds
- We currently organise and offer facilities for Friday prayers to the local Muslim population in Dartford and the surrounding areas. We utilise the sports hall of a local church and cater to over 150 regular attendees (with arrangements made for both men and women)

Top
Target
Site



SERENA MEMORIAL HALL

Address: Serena Memorial Hall, 396 Princes Road, Dartford, Dartford, Kent, DA1 1LA

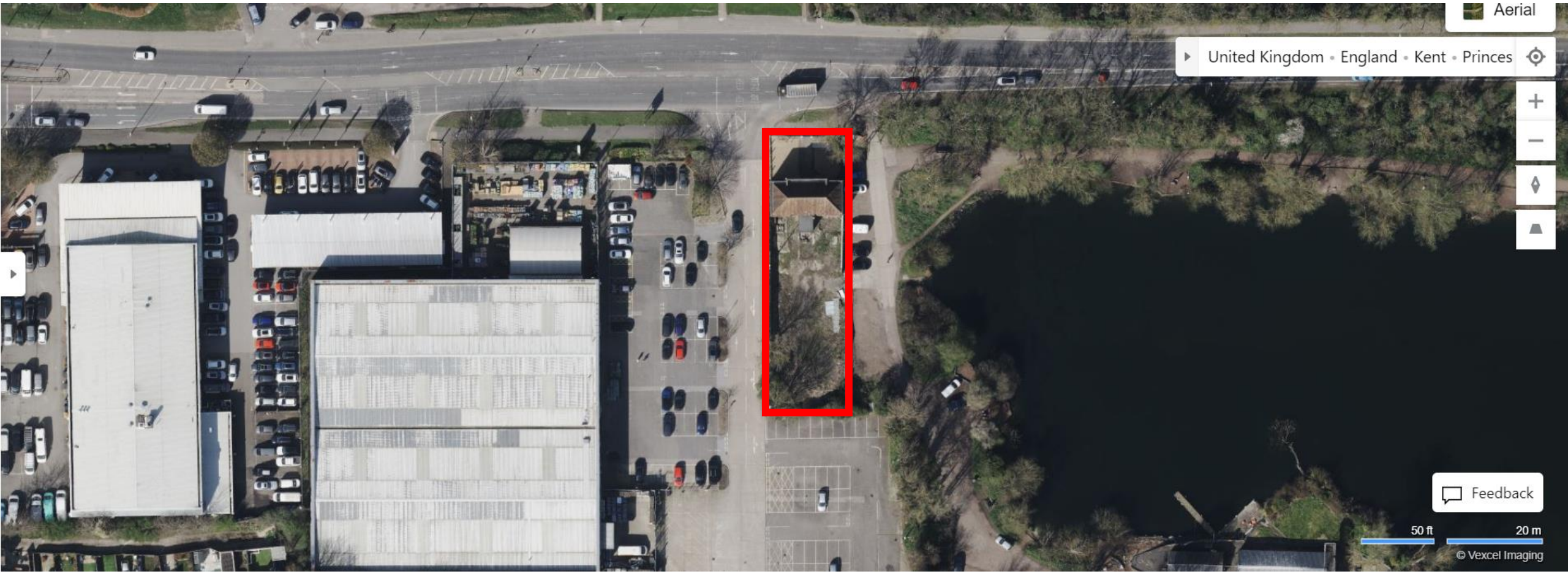
Key Specifications

- **Asking price: £850,000**
- Seller: Oakhurst Guardian Ltd
- Sitting on plot of over 980m²
or 0.24 acres
- Space for 15+ parking spaces
- Clear indication that planning
permission will be granted
for change of use



History: The "Serena" building along Princes Road was designed by Gerald E. Burgess and officially opened on 18th July 1937 following a generous donation by Miss Marie Serena.

It served as the local headquarters for St John's Ambulance service in Dartford.



Aerial

United Kingdom • England • Kent • Princes



Feedback

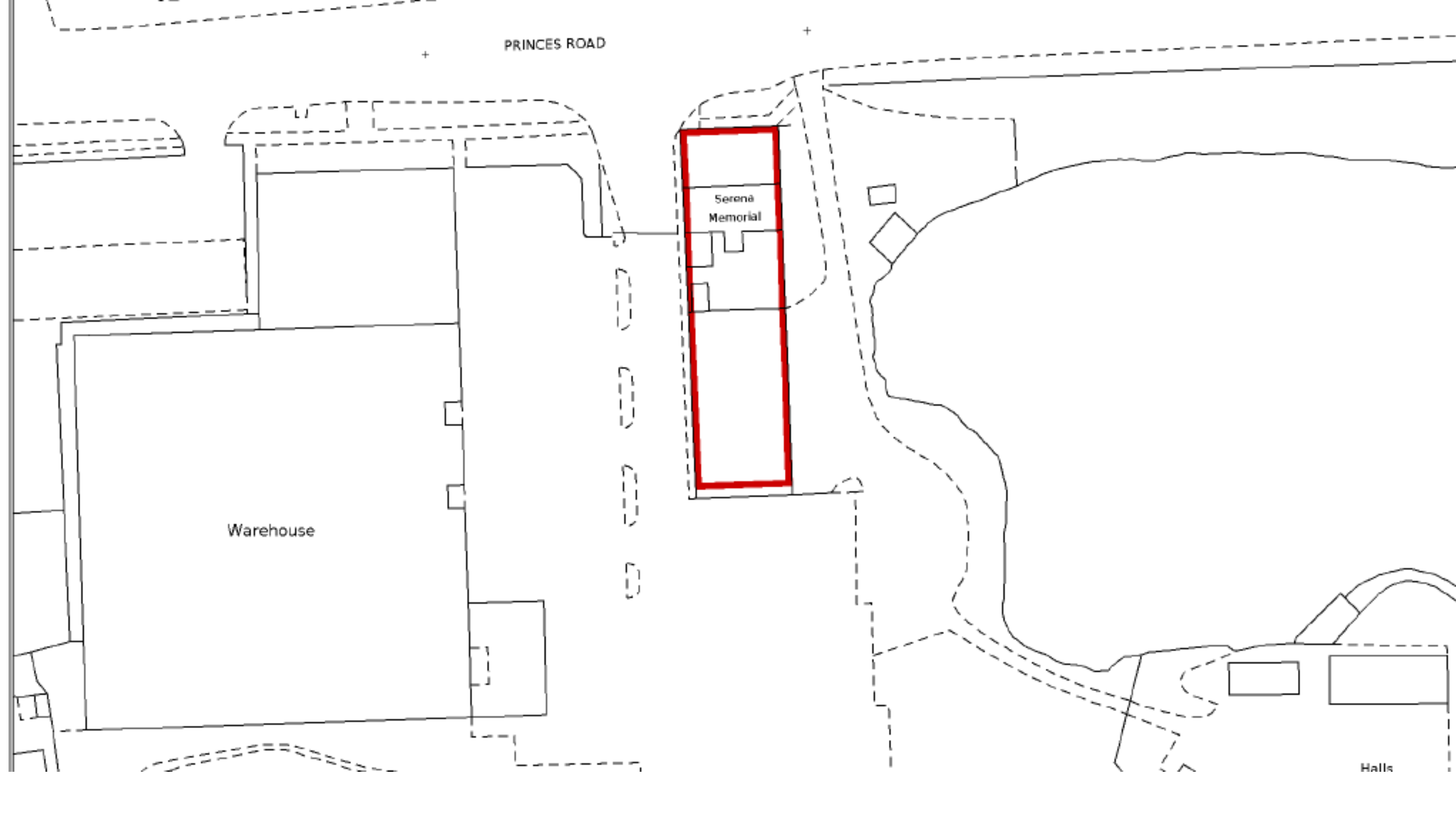
50 ft 20 m
© Vexcel Imaging

PRINCES ROAD

Serena
Memorial

Warehouse

Halls





Future Development

- Potential to resurrect [request](#) from 2006 to the Council to purchase additional wedge of land (highlighted by black verge)
- This could allow for improved access to the rear parking spaces, and better utilization of the portion of the ground floor which is used as a drive-through to the rear garden at present

